

BAYLOR COUNTY 4-H CLUB NEWSLETTER

*Baylor County Extension office
500 N. Main Street
Seymour, Texas 76380
Phone # 940-889-5581*

*Josh Kouns, County Extension Agent
Joy Self, County Extension Agent
Kayla McLarty, Officer Manger*

4-H Updates

Monthly Meeting:

October 11, 2021 at 6pm
at the Extension Building

Practices: @ the extension

Livestock Judging:

Mon. & Thurs. at 4-5

Quiz Bowl Practices:

Starts Oct. 6, @ 4-5 and will be on
Wednesdays.

Food Challenge: Sunday Oct. 10 2pm to 3:30

Food Show: Joy will contact you if you fill
out the google form.



National 4-H Week

Oct. 3-9, 2021

We will kick off the
week

with Ice Cream in the
park Sunday Oct. 3rd @
1pm

Baylor County 4-H Officers 2021-2022

<i>President</i>	<i>Rilee Slaggle</i>
<i>V. President 1st</i>	<i>Olivia Ward</i>
<i>V. President 2nd</i>	<i>Layton McAdams</i>
<i>V. President 3rd</i>	<i>Cooper Daniel</i>
<i>Secretary</i>	<i>Jake Orsak</i>
<i>Treasurer</i>	<i>Brady Norris</i>
<i>Health & Safety</i>	<i>Remington McLarty</i>
<i>Reporter</i>	<i>Madeline Glass</i>
<i>Parliamentarian</i>	<i>Jantz Self</i>
<i>4-H Ambassador</i>	<i>Jarren Wright</i>
<i>4-H Ambassador</i>	<i>Ruthie Wright</i>

Baylor County 4-H **at the** **Cruisin' The Brazos**

We will have a booth set up to paint pumpkins!

To paint a Pumpkin make a monetary donation or bring can goodies to donate to the Church of Christ Sonshine Days! All Monetary donation will go to buy items to donate!
October 9, 2021!



This is year the 4-Hers will be participating in Operation Christmas Child Shoebox. We will be collecting items and hosting a packing party @ the November monthly meeting!

Operation Christmas Child Items we are Collecting!

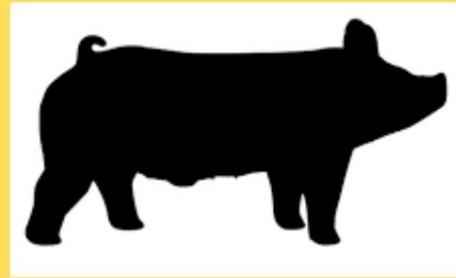
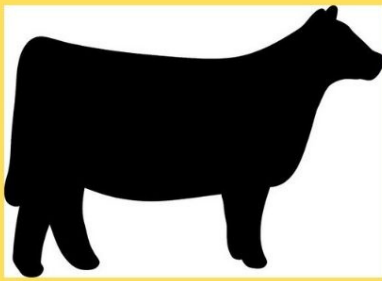
empty shoebox	school supplies
bar soap	small toys
toothbrushes	stuff animals
combs/hair brush	ponytail holders
wash clothes	Socks/undergarments

items to not include
candy,toothpaste, used or damaged items;
liquids, breakable items, or war related
items(army or guns).



More information call:
Kayla McLarty
940-889-5581





Baylor County 4-H Livestock Judging Practice Schedule

All practices from 4-5pm

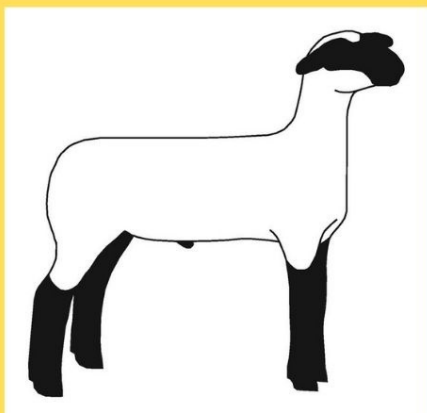
Sept. 30

Oct. 4,7,11,14,18,21,25,28

Nov. 1,4

District Contest in Vernon

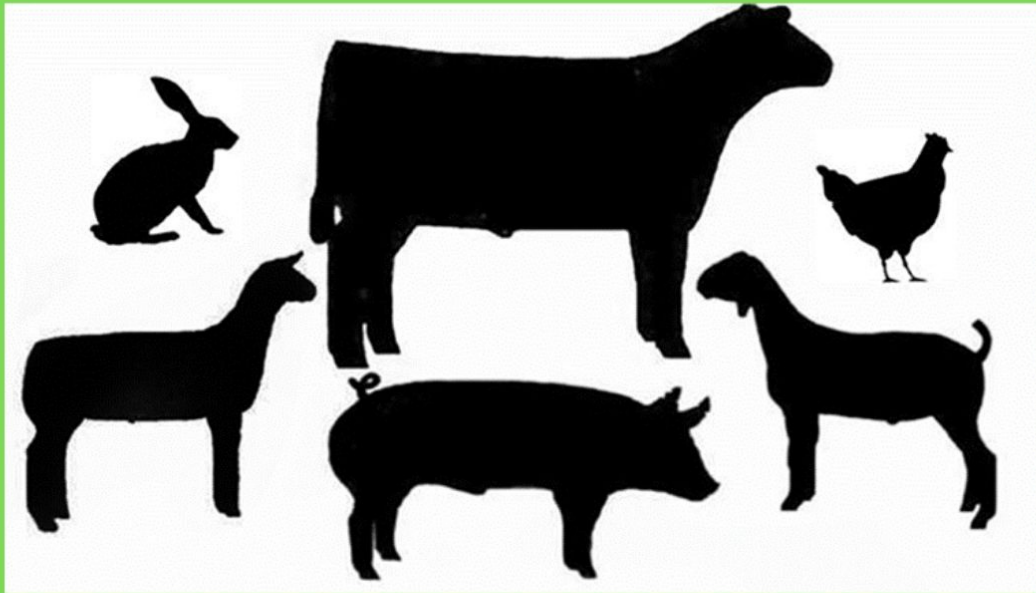
Nov. 8, 2021.





Food Show, Food
Challenge, Food Quiz Bowl
Contest!

**We will start
practice soon!
Please fill out the
google form so we
know who is
interested!**



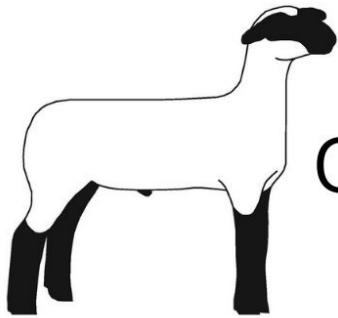
The Baylor County Junior Livestock Show Board would like to invite all 2nd – 12th graders to participate in our 2022 stock show.

The stock show will be held on January 13-15th, 2022. Although 2nd graders are not eligible to participate in 4-H, they are eligible for the stock show and a 4-H advisor will oversee their animals.

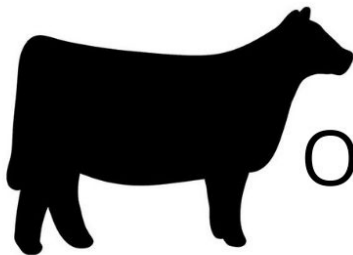
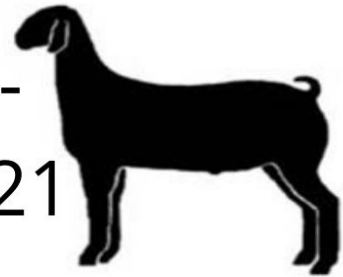
Participants in the stock show may show rabbits, broilers, turkeys, goats, lambs, swine, steers, or heifers.

Deadlines are fast approaching! For more information, please contact Josh Kouns at 940-889-5581 or Corley Latham at 940-357-9230.

Validation for Baylor County Junior Livestock Show



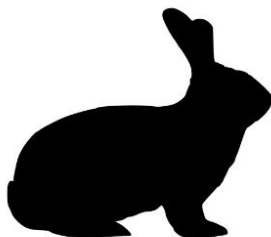
Sheep & Goat-
October 25, 2021
6-7pm



Heifers-
October 26, 2021 6-7pm



Swine-
November 21, 2021 4-6



Rabbit-
December 12 time TBA



Anytime Pizza

Make your own pizza topped with green peppers, mushrooms, or other vegetables.

Serves: 2

Ingredients:

¼ mini baguette or Italian bread split lengthwise or

2 split English muffins

½ cup pizza sauce

½ cup part-skim shredded mozzarella or cheddar cheese

¼ cup chopped green pepper

¼ cup sliced fresh or canned mushrooms

Optional, other vegetable toppings as desired

Optional, Italian seasoning.

Directions:

1. Toast the bread or English muffin until slightly brown.
2. Top bread or muffin with pizza sauce, vegetables, and low-fat cheese.
3. Sprinkle with Italian seasonings as desired.
4. Return bread to toaster oven (or regular oven preheated to 350 degrees).
5. Heat until cheese melts.

Nutrients Per Serving: 180 calories, 7 g total fat, 3 g saturated fat, 15 mg cholesterol, 502 mg sodium, 18 g carbohydrates, 2 g fiber, 4 g total sugar, 1 g added sugar, and 11 g protein

Total Cost per serving: \$\$\$\$